

914 specialties

...all sorts of things about the 914 Turbo

Users Guide TCU Software (DOS Version)

The turbo switch on the 914

... or what is the mystical devil thing actually for? Quite a few people have bought a new crankshaft with the switch.

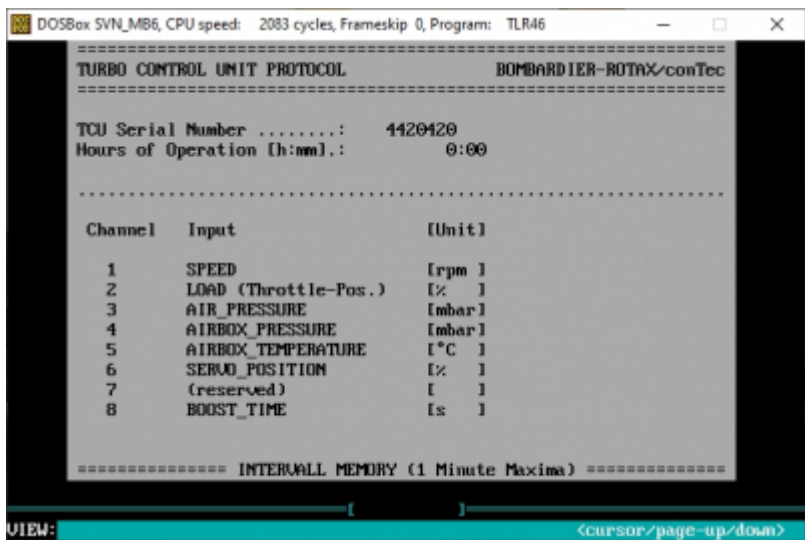
what can happen with a defective wastegate flap servo

... the orange warning light indicates a possible defect in the wastegate flap servo and what the consequences can be.



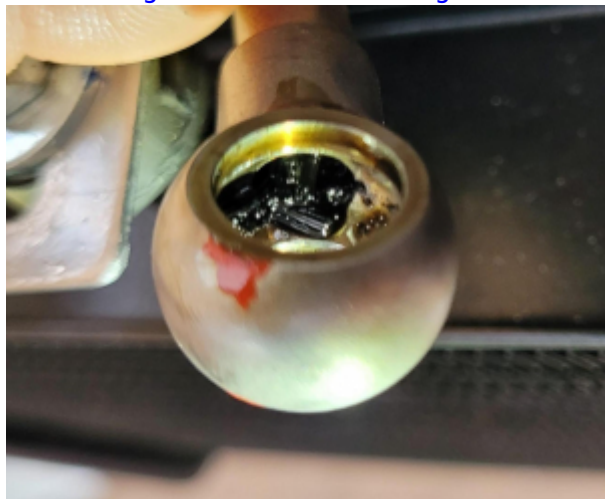
... a great day for all 914 screwdrivers: since 16.03.2022 there is a new software to talk to the TCU.

[BRP Utility and Diagnostic Software B.U.D.S. Aircraft 4.0.0](#)



... a little something about the "old" software for the 914: TLR 4.6.
Or, how you could and still can talk to the TCU.

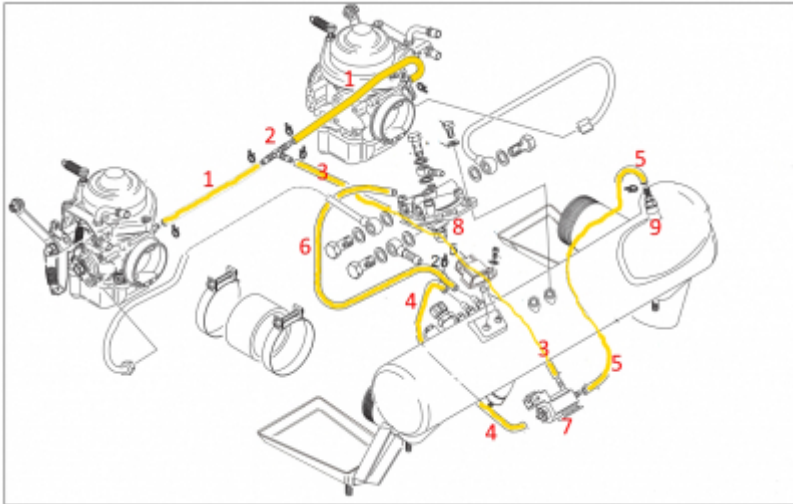
The cooling run of the turbocharger ... and what can happen if you don't keep to it



The check valve on the 914 turbocharger
.... or why there is a pool of oil under the 914.

at what speed is the wastegate flap closed under full load?
This question often comes up in discussions about lack of power.
This goes hand in hand with the assumption that the wastegate flap can no longer close properly due to distortion.

the hoses of the float chamber ventilation
... on the 914 and its pitfalls.



From:
<https://kleinjung.de/rotax/> -

Permanent link:
https://kleinjung.de/rotax/doku.php?id=en:914_specialties

Last update: **11.03. 2025 07:47**

